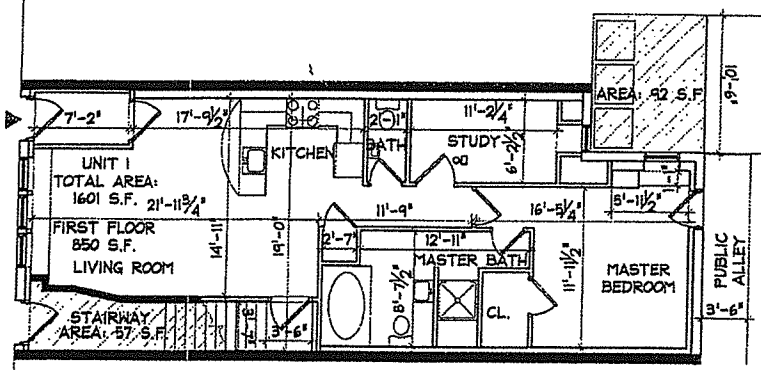
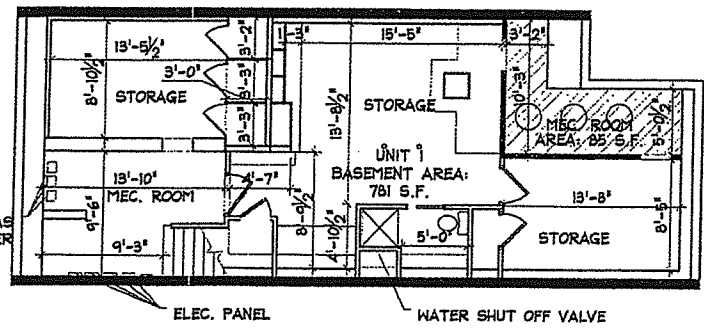


1469



FIRST FLOOR  
SCALE: 1/8"=1'-0"

- UNIT DEMISING WALL
- EXCLUSIVE USE AREA APPURTENANT TO UNIT
- PRIMARY UNIT ENTRANCE
- COMMON AREA



BASEMENT LEVEL  
SCALE: 1/8"=1'-0"

257-259 MAIN STREET  
CHARLESTOWN CONDOMINIUM TRUST  
CHARLESTOWN, MA  
Sheet 1 of 1

UNIT 1 TOTAL AREA:  
1601 SF

NESHAMKIN FRENCH ARCHITECTS, INC.  
5 MONUMENT SQUARE,  
CHARLESTOWN, MA 02129  
(617)-242-7422

"I CERTIFY THAT THIS PLAN WAS PREPARED IN CONFORMITY WITH THE RULES AND REGULATIONS OF THE REGISTRY OF DEEDS."  
"I CERTIFY THAT THIS PLAN FULLY ACCURATELY DEPICTS THE LAYOUT, LOCATION, UNIT NUMBER AND DIMENSIONS OF THE UNITS NUMBERED 1 INCLUDED IN THE LEASEHOLD CONDOMINIUM LOCATED AT 257-259 MAIN STREET AS BUILT."

DATE: 07/22/03  
SIGNED: [Signature]

REGISTRY USE ONLY

First of 201

2003 07 22

35724-155